



# H43 TPX

## Performance

- 42.2 m working height
- 20 m maximum outreach
- Load capacity: 230 kg (2 persons) /450 kg (3 persons)
- 2 axis jib rotation, 150° horizontal and 140° vertical

## Productivity

- Strong, quick and manoeuvrable boom
- Compact and easy to transport
- Faster lifting to full height
- Unequalled all terrain capabilities

## Easy to use

- Continuous movement control
- Continuous outreach control
- Smooth and precise controls



**Haulotte**   
GROUP

More than lifting





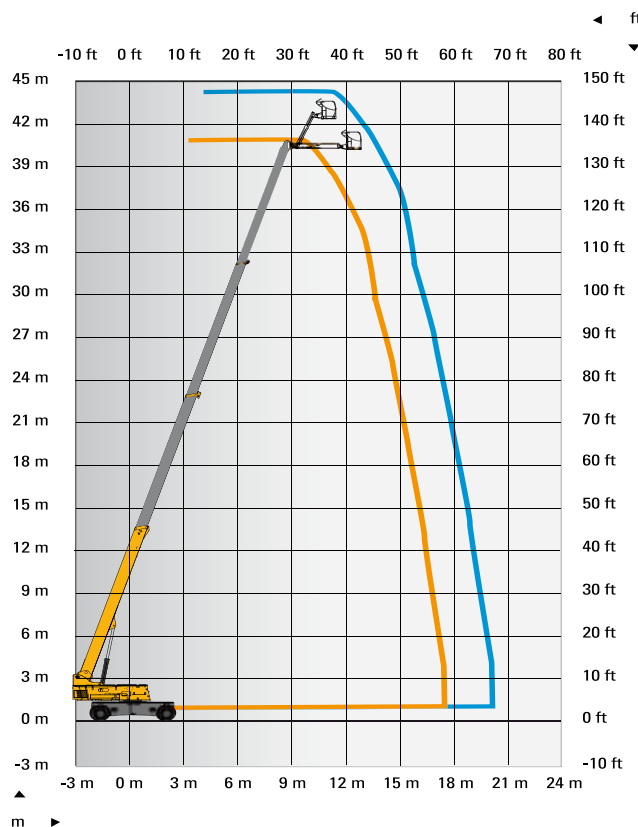
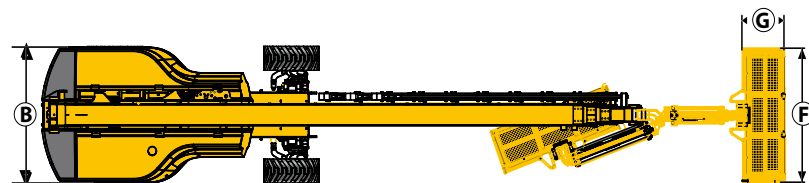
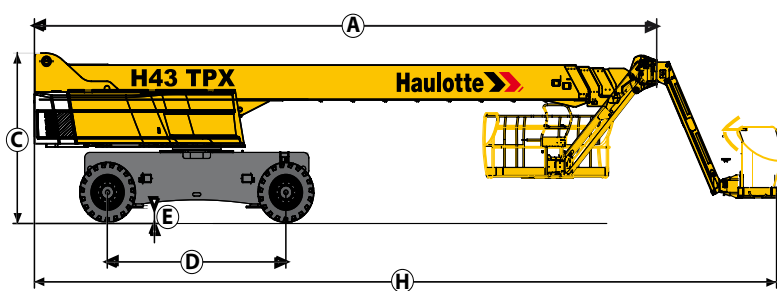
# H43 TPX

ROUGH TERRAIN TELESCOPIC BOOMS

## TECHNICAL DATA

## H 43 TPX

Working height	42.2 m
Platform height	40.2 m
Horizontal outreach	20 m
Lift capacity	230 - 450 kg
<b>F</b> x <b>G</b> Platform size	2.44 x 0.8 m
<b>H</b> Length - stowed	14.5 m
<b>A</b> Length - storage	12.3 m
<b>B</b> Width	2.5 m
<b>C</b> Height - stowed	3.05 m
<b>J</b> Height - storage	3.05 m
Vertical jib rotation	140° (+70/-70)
Platform rotation	180° (+90/-90)
Boom rotation angle	73° (+73/-0)
Turntable rotation	360°
Tailswing	158 cm
<b>D</b> Wheelbase	3.5 m
<b>E</b> Ground clearance	38 cm
Tilt	4°
Drive speed	0.5 - 5 km/h
Gradeability	40 %
Turning radius - outside	5.75 m
Tires - foam-filled	445/65-22.5
Engine	55.5 kW - 75.4 hp (Europe) / 62.4 kW - 84.9 hp (outside Europe)
Weight	20600 kg



## STANDARD EQUIPMENT

- Proportional and simultaneous controls
- 4 wheel drive and steer
- 2 extendable axles
- Oscillating axle
- Swing out engine tray for ease of maintenance
- 12 V battery / electrical control system
- Auxiliary power in platform
- Differential lock
- Hourmeter
- Mechanical turret slewing hook
- Towing hooks
- Outside use: withstand winds up to 45 km/h
- Sound and light signal for tilt and weighing
- Gull wing style cowlings

## OPTIONS AND ACCESSORIES

- Onboard generator 3.3 kW and 9 kW
- 230V / 115V - 16A power platform
- Biodegradable hydraulic oil
- Travel alarm
- Rotating beacon
- Working light



Authorised Reseller : Shakti Equipments Pvt. Ltd.

Block No. 140, Near Vitawa Octroi Naka, Thane Belapur Road, Vitawa, Thane West - 400 605.

Tel: +91 - 22 - 2542 0127 Email: info@shaktiequipments.com