



HA32 PX

Outstanding rough terrain driving features

- 4 wheel drive and steer
- Oscillating axle
- Differential wheel lock
- 38 cm ground clearance
- Full proportional controls and simultaneous boom functions

Optimal productivity

- The tightest turning radius on the market
- Max. 21.30 m horizontal outreach
- Unrestricted working envelope



Haulotte 
GROUP

More than lifting





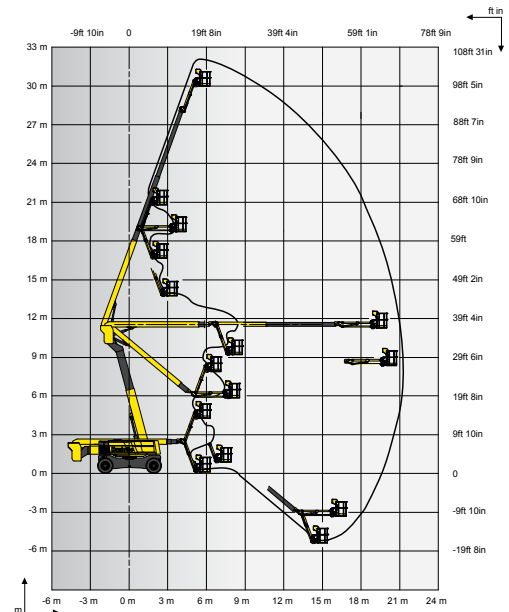
HA32 PX

ROUGH TERRAIN ARTICULATING BOOMS

TECHNICAL DATA

HA32 PX

Working height	31.8 m
Platform height	29.8 m
Horizontal outreach	21.3 m
Up and over clearance	11.35 m
Lift capacity	250 kg
F x G Platform size	2.44 x 0.8 m
A Length	11.4 m
H Transport length	8.9 m
B Width	2.5 m
Width - with extended axles	3.3 m
C Height - stowed	2.8 m
Transport height	3.3 m
Vertical jib rotation	140° (+70/-70)
Platform rotation	174° (+87/-87)
Turntable rotation	360°
Tailswing	3.3 m
D Wheelbase	3.5 m
E Ground clearance	38 cm
Tilt	5°
Drive speed	0.5 - 5 km/h
Gradeability	40 %
Turning radius - outside	5.74 m
Tires - foam-filled	445/65-22.5
Power source	55.5 kW - 75.4 hp (Europe) / 62.4 kW - 84.9 hp (outside Europe)
Weight	20100 kg

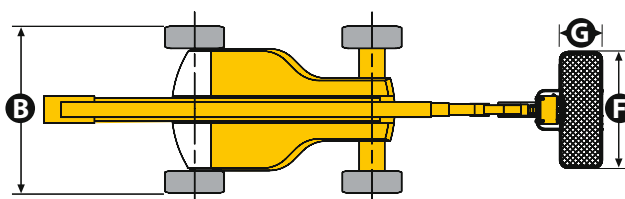
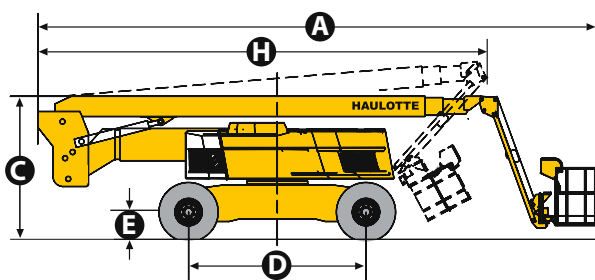


STANDARD EQUIPMENT

- 4 wheel drive and steer
- Front oscillating axle increasing stability on uneven ground
- 2 extendable axles
- Differential wheel lock increasing rough terrain capacity
- Proportional controls enhancing comfort and safety
- 4 simultaneous movements for highest productivity
- 250kg / 550lbs (2 persons) load capacity unrestricted working envelope
- Large platform with drop bar entry gate
- Power to platform (Female plug in the basket 110V / 220V)
- Swing out engine tray for ease of maintenance
- Safe to use in winds up to 60km/h - 37mph
- Sound and light alarm for tilt and load
- Electric pump system and emergency descent
- 12 V battery / electrical control system
- Towing hooks
- Hourmeter
- Low fuel level indicator (upper control box)
- Engine pre-heater with light indicator

OPTIONS AND ACCESSORIES

- Hydraulic oil cooler
- Hydraulic oil in tank and circuit for warm countries
- Biodegradable hydraulic oil
- Automatic Overspeed Air Shutdown Valve (Electric one-way valve, flame arrestor, spark arrestor)
- Cold weather kit
- On-board 3,3 kW generator
- Upper control box protection cover (transparent plastic and fixed place)
- Battery cut-off
- Fuel pre-filter
- Air pre-filter
- Travel alarm
- Alarm package (motion alarm and travel alarm)
- 55W Platform working light
- 15W flashing light
- Rotating beacon
- Cap with key for diesel tank



2421604380 - We reserve the right to modify the technical characteristics of this document without notice - 07/2013



Authorised Reseller : Shakti Equipments Pvt. Ltd.

Block No. 140, Near Vitawa Octroi Naka, Thane Belapur Road, Vitawa, Thane West - 400 605.

Tel: +91 - 22 - 2542 0127 Email: info@shaktiequipments.com